



SZÉKESFEHÉRVÁR factsheet



Új Váralja sor 16
H-8000 Székesfehérvár, Hungary

GPS N 47.18018, E 18.42806



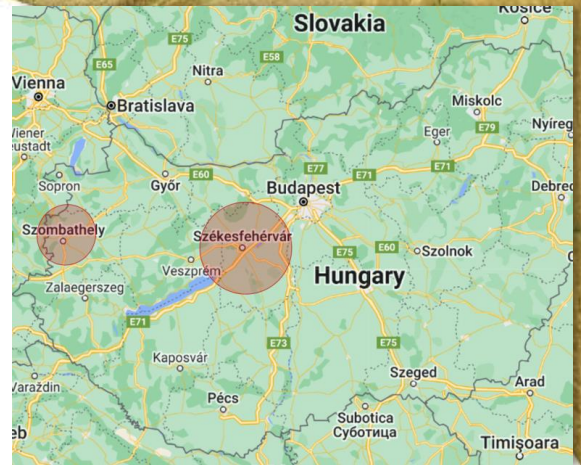
Jozsef Pardi
+36 22501684
jozsefpardi@eurofins.com



14 Field Technician
4 Manager, program managers and support roles



85% trials located 50km around **Szekesfehervar** main station and **Szombathely** satellite base
1 long term land rental for GLP eFate studies

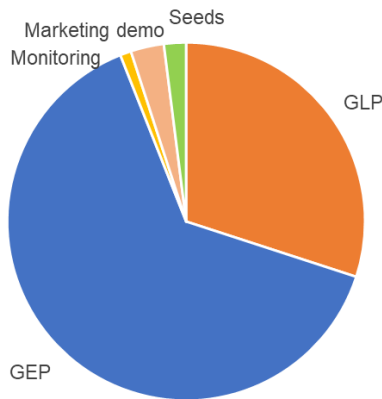


Közép-Dunántúl & Vas
South East EPPO Zone
North GLP Zone

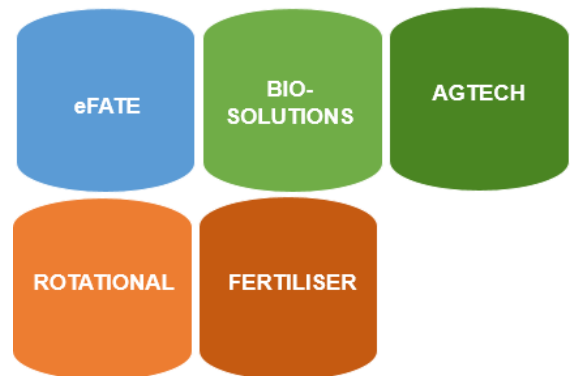


GEP Studies
GLP Studies

Core Services



Expert Services



Specialist Equipment



Land Preparation Equipment



Drill/Planter



Combine Harvester



Grain analysis



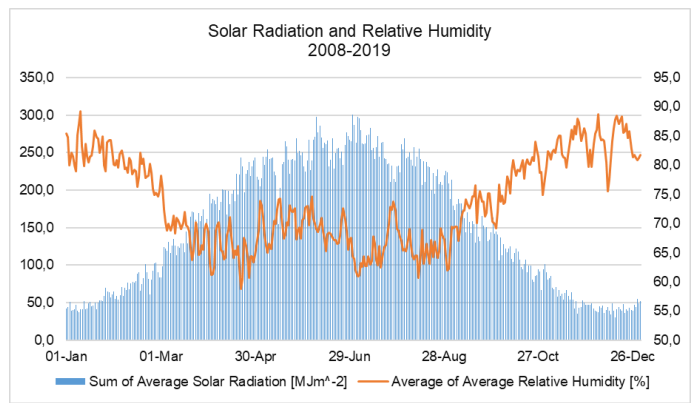
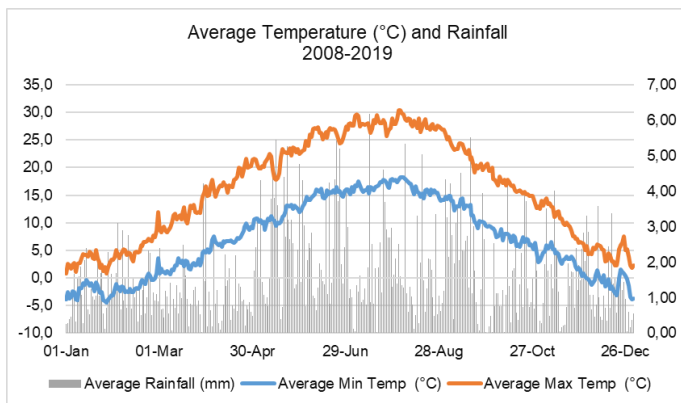
Misting/Irrigation System



Drone



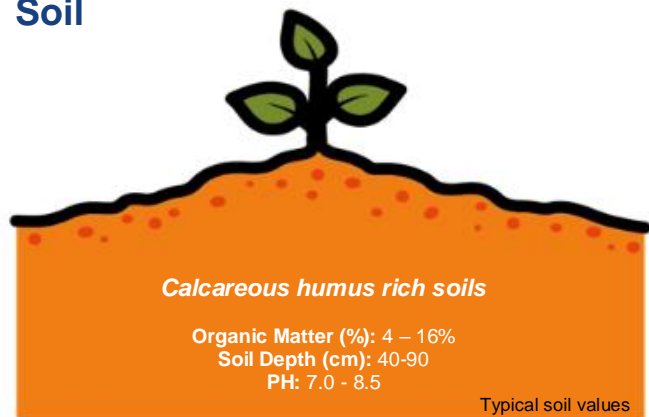
Climate



Farming practices



Soil



MAIN CROPS			J	F	M	A	M	J	J	A	S	O	N	D
Winter barley (HORVW)	450-500 seed/m ²	5-7 t/ha												
Winter oilseed rape (BRSNW)	50-60 seeds/m ²	3-4 t/ha												
Winter wheat (TRZAW)	450-500 seed/m ²	4-8 t/ha												
Maize (ZEAMX) grain	60000-75000 pl/ha	7-10 t/ha												
Sunflower (HELAN)	55000-65000 pl/ha	2-3 t/ha												
Potato (SOLTU)	4000 kg/ha	35 t/ha												
Soybean (GLYMX)	350-550000 pl/ha	2-3 t/ha												
Tomato (LYPES)	40000-50000 pl/ha	40-50 t/ha												
Grapes (VITVI)	3-4000 pl/ha	8-15 t/ha												
Apple (MABSD)	1250 pl/ha	15-30 t/ha												
Stone fruit (Apricot, Cherry, Peach, Plum)	450-1200 pl/ha	15-30 t/ha												

Niche Crops

Vegetables, Tobacco

