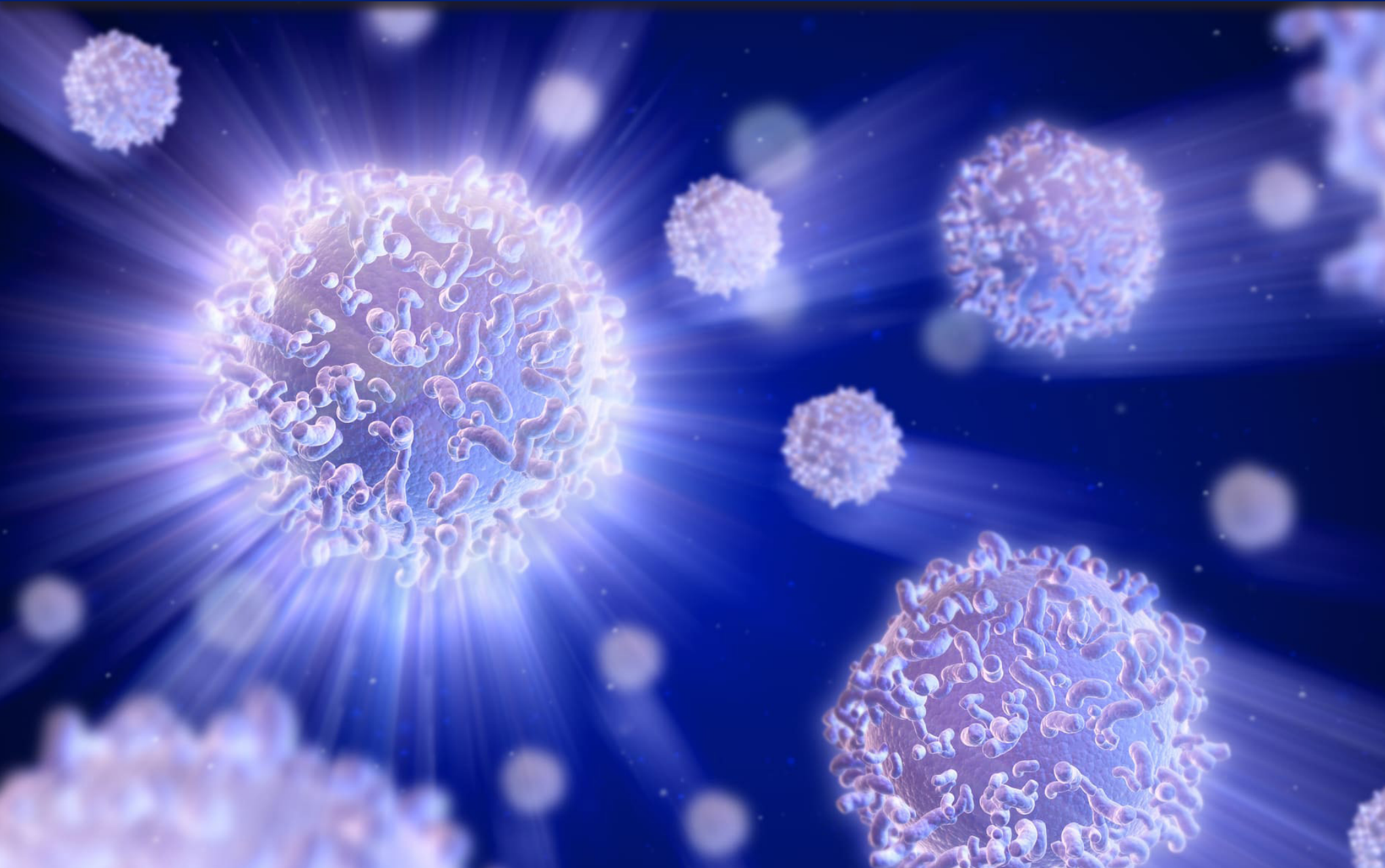


PBMC NETWORK



BioPharma Services



EUROFINS PBMC PROCESSING NETWORK

- This service offering entails effective harvesting, processing, cryopreservation, and shipping for storage or downstream analysis of peripheral blood mononuclear cells (PBMCs)
- Currently our global PBMC network deploys 34 locations and we are adding more with every new clinical protocol
- This allows clients the ability to evaluate immune functional responses to therapeutic agents and gain a deeper understanding of immune system function pre-dose, post-dose, and at other integral stages of testing
- Global presence for sample stability and processing at a Eurofins facility utilizing harmonized PBMC processes and analysis across core laboratory locations
- Additional complementary network of wholly owned, Eurofins labs can be brought on board to support rapid turnaround (<24 hours) sample processing
- Can process and stabilize locally and ship for storage/ downstream testing
- Specialized testing services available – PBMC processing/Flow cytometry/ Virology specimen stabilization

ANY CORNER OF THE WORLD



CORE EUROFINS PBMC NETWORK

- 34 active global locations, PBMC experienced Laboratory Technicians and downstream analytical capabilities
- Can provide 24 TAT from point of collection to processing, from most global site locations
 - Eurofins Standard PBMC processing protocols
 - Ficoll Pacque Method
 - CPT Mononuclear Cell Preparation Tube
 - Accuspin PBMC Isolation Tube
 - 25+ different Sponsor defined processing protocols
 - Variation in:
 - Window of processing
 - Collection techniques
 - Washing steps
 - Specialized stabilization media
- Can incorporate Sponsor defined PBMC processing protocol via laboratory/technician qualification, including cellular viability

For 24 hours TAT requirements, all PBMC shipments are expedited, we verify at the onset of any project the exact times when PBMC isolation may be required, and we request site communication so that we can ensure adequate staffing ahead of time.

Eurofins differentiates itself to the biopharma industry by offering 3 distinct solutions for rapid TAT PBMC stabilization:

EUROFINS CORE NETWORK



Utilization of Eurofins Core PBMC network and supplementary Eurofins global network of laboratory-based locations. The existing Eurofins core laboratory locations have historically existed for provision of 24-hour TAT processing from any clinical trial site on a global level.

TRAIN THE TRAINER



Utilization of a “Train the Trainer” model. In this model, Eurofins would assume responsibility for training personnel on-site on Sample Processing Laboratories (SPLs).

TRAVELING LAB TECHS



Utilization of Travelling Laboratory Technician services. These services would include CAP-Certified Eurofins Laboratory staff travelling to laboratory sites and performing standardized and harmonized processing of specimens on-site.

It is imperative to maintain a high-level of quality at all stages of PBMC clinical laboratory testing. This is important beginning at the point of specimen collection all the way through to processing, shipping, handling, storage, and assaying of the specimen.

