



SCHWIEBERDINGEN factsheet



Scheerwiesenweg 41,
71071 Schwieberdingen
Germany

GPS 48.879000, 9.085033



Michael Härle
+49 170 3380337
MichaelHaerle@eurofins.com



5 Field Technicians



Field Network of **35** Farmers
50km trial radius

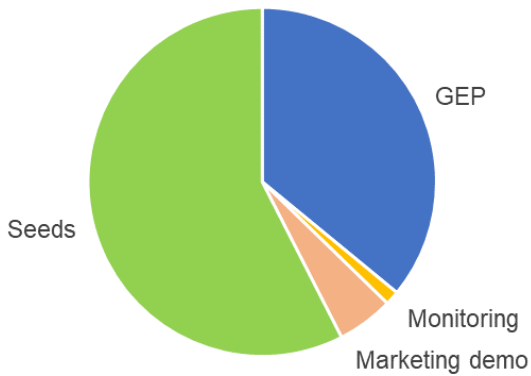


**Baden-Württemberg,
Germany**
Maritime EPPO Zone
North GLP Zone



GEP Studies

Core Services



Expert Services



Specialist Equipment



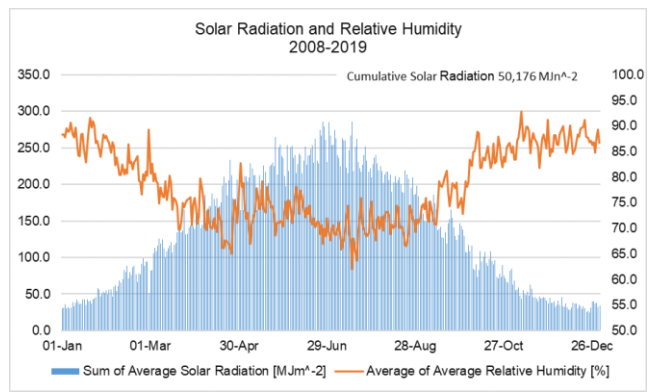
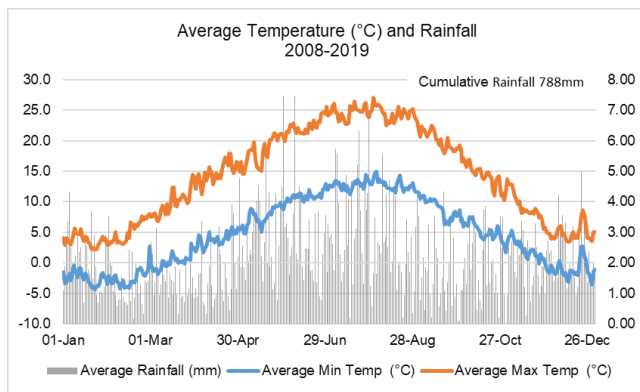
Drill/Planter



Combine Harvester



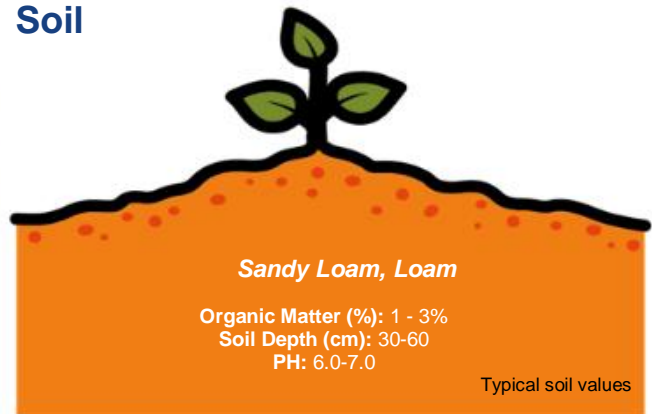
Climate



Farming practices



Soil



MAIN CROPS			J	F	M	A	M	J	J	A	S	O	N	D
Winter oilseed rape (BRSNW)	40-60 seeds/m ²	3-4 T/ha												
Winter barley (HORVW)	250-350 seeds/m ²	6-7 T/ha												
Winter wheat (TRZAW)	250 - 350 seeds/m ²	7-10 T/ha												
Rye (SECCE)	250-300 seeds/m ²	7-8 T/ha												
Spelt (TRZSP)	200-300 seeds/m ²	8 T/ha												
Spring barley (HORVS)	300-350 seeds/m ²	6 T/ha												
Sugar beet (BEAVA)	90000 seeds/ha	50-100 T/ha												
Soybean (GLXMA)	60-75 seeds/m ²	1,5-2 T/ha												
Potato (SOLTU)	40-45000 plants/ha	35 T/ha												
Corn (ZEAMX) silage	9 Seeds/m ²	8-10 T/ha												
Corn (ZEAMX) grain	9 Seeds/m ²	8-10 T/ha												
Grapes (VITVI)														

Niche Crops Open field vegetables(lettuce, cabbage, onion etc)
Winter durum wheat, Triticale, Oats

